

# CASE STUDY BOB ROHRMAN ARLINGTON NISSAN

ANNUAL KWH SAVED

131,601

ANNUAL SAVINGS

\$16,100.00

ENERGY REDUCED

69.6%

## PAYBACK 0.46 YEARS

**CHALLENGE:** The Bob Rohrman Arlington Nissan service department was over-engineered when it was built, but still resulted in a lack of light throughout the facility. The light levels ranged from only 3FC-10FC, which forced technicians to use individual task lights in their service bays. In addition, four large industrial fans created uneven light and dark shadowing throughout the area. The Bob Rohrman Auto Group needed high levels of evenly spread light with maximum energy reduction.

**SOLUTION:** Tenesis was able to design a new grid system that involved repositioning new fixtures and establishing various fixture heights in order to achieve the desired light levels. We were able to maximize the light levels to 120FC with the least amount of fixtures necessary.



**TENESIS**

TOTAL ENERGY SOLUTIONS

SCHEDULE YOUR  
**FREE ENERGY AUDIT**  
877.485.1205

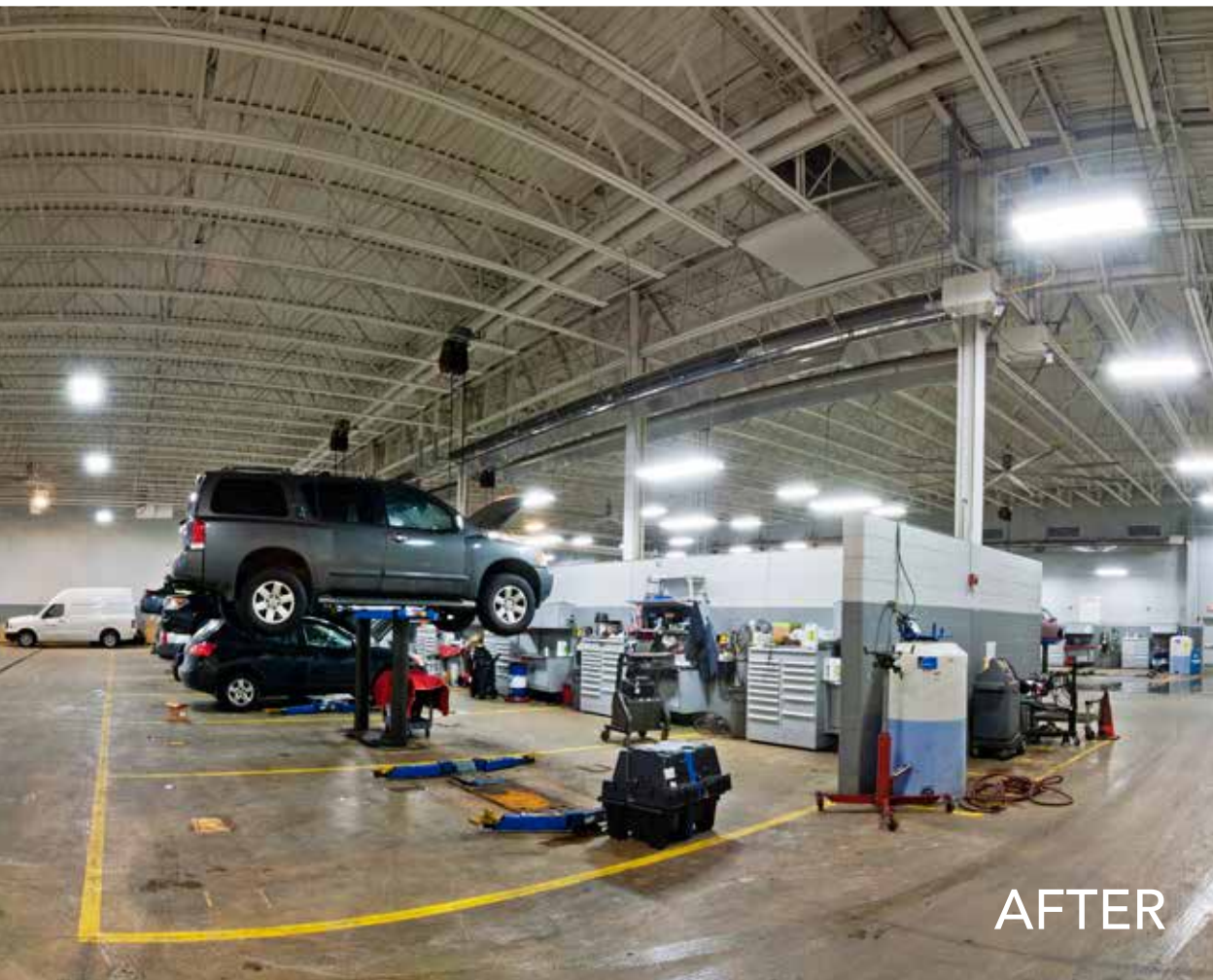
226 Hawk Hollow Drive, Bartlett, IL 60103 | [TENESIS.COM](http://TENESIS.COM)

© 2013 Tenesis Fully Compliant with ARRA Buy American requirements

Made in the U.S.A.



BEFORE



AFTER